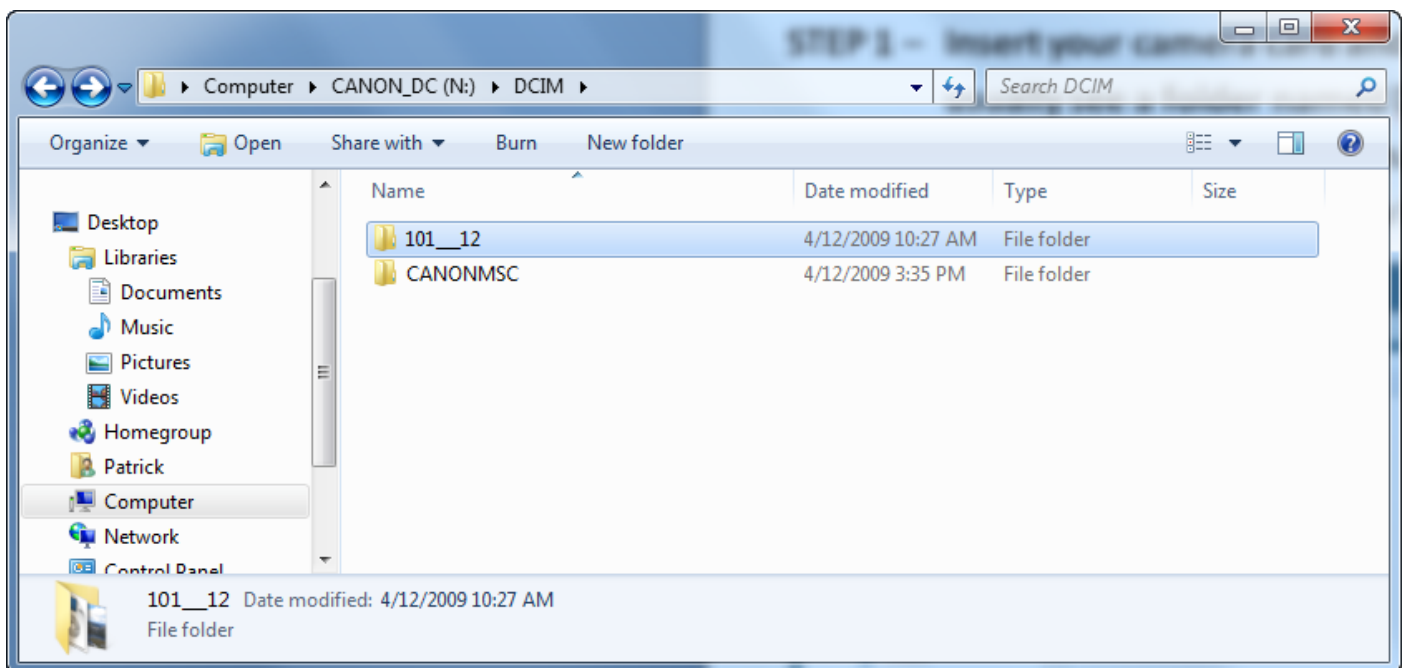
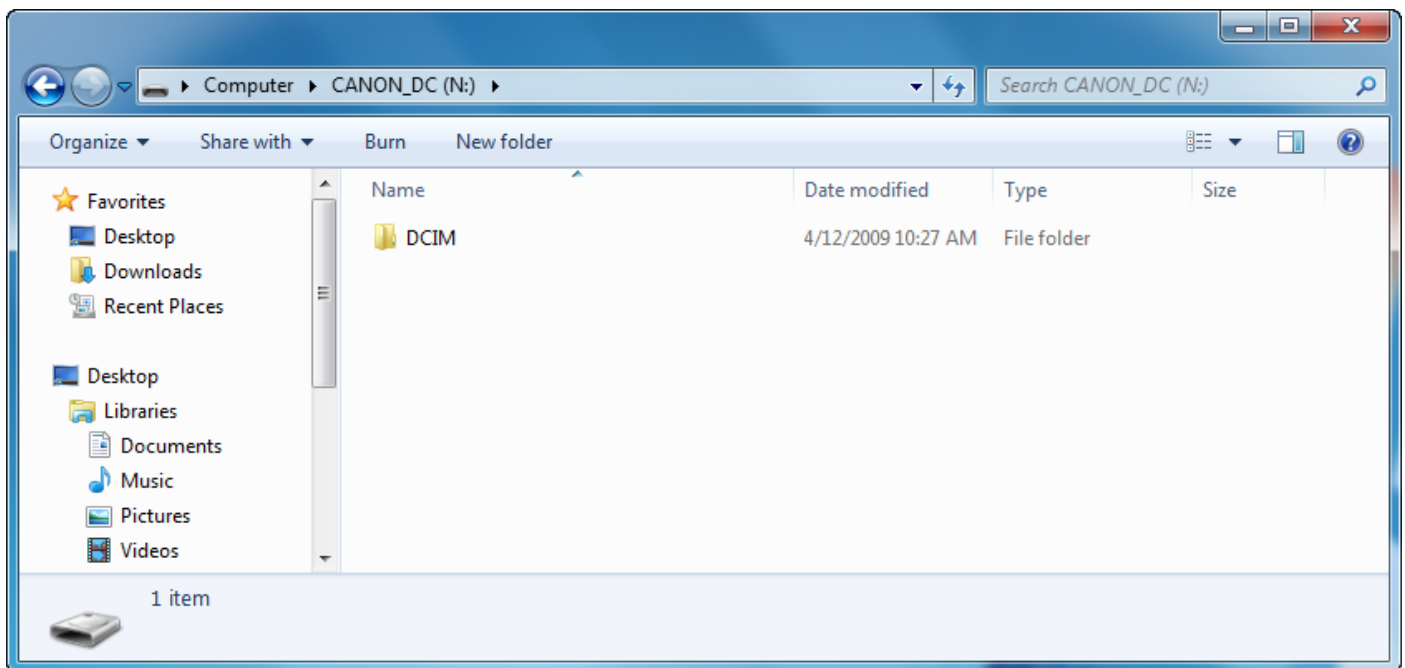
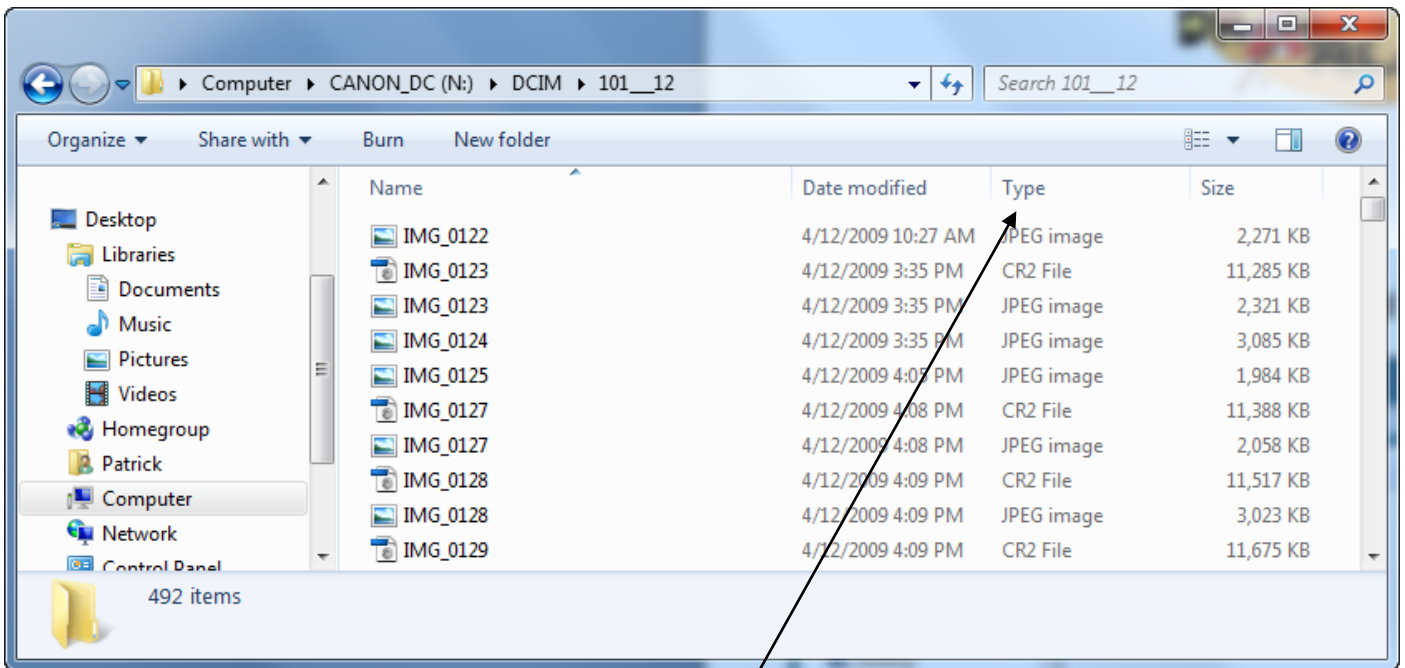




SENDING PHOTOS

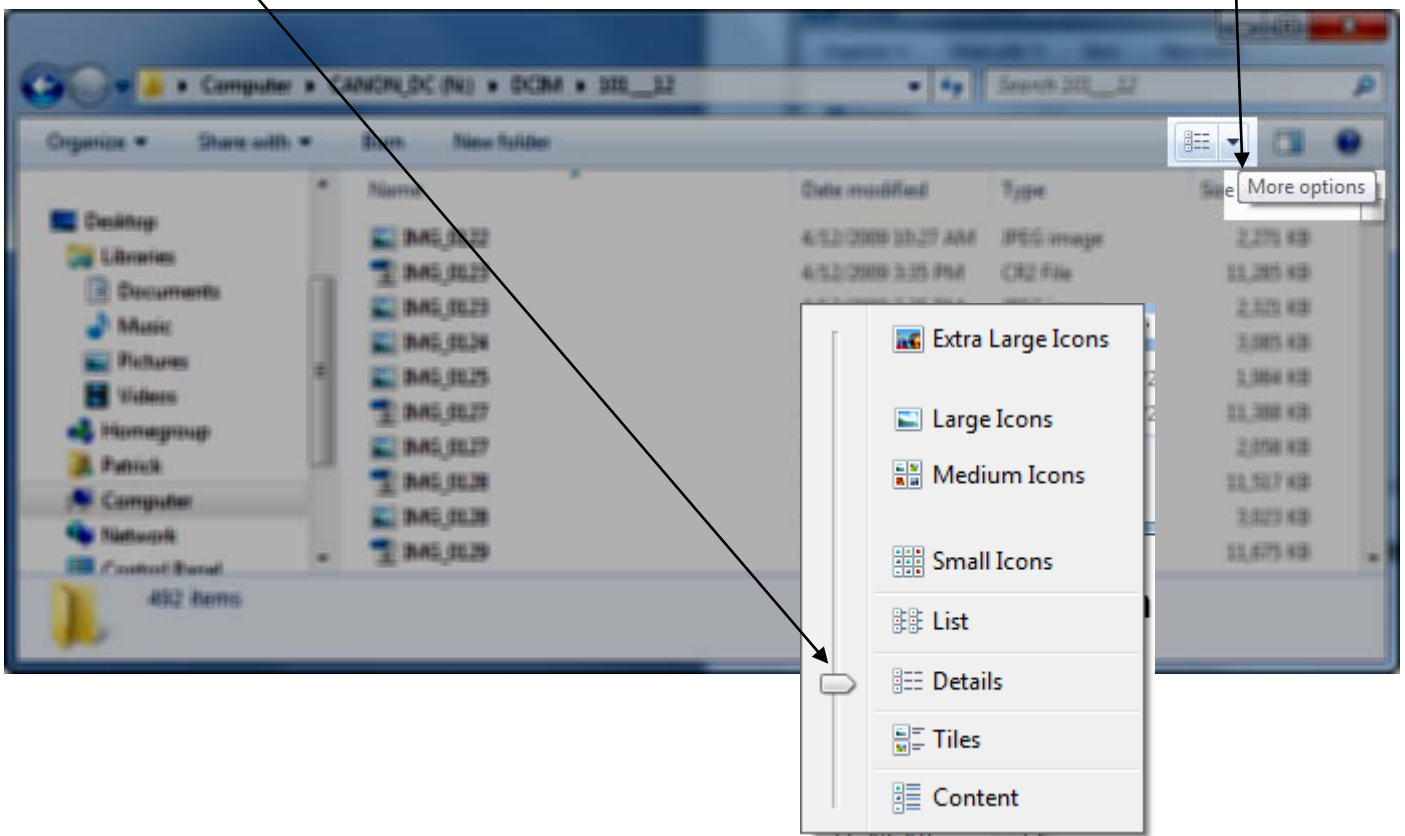
STEP 1 – Insert your camera card and locate the images folder. You will usually see a folder named DCIM (or similar). Double click on it and then select the images folder (you may also have a video folder if your camera takes video).



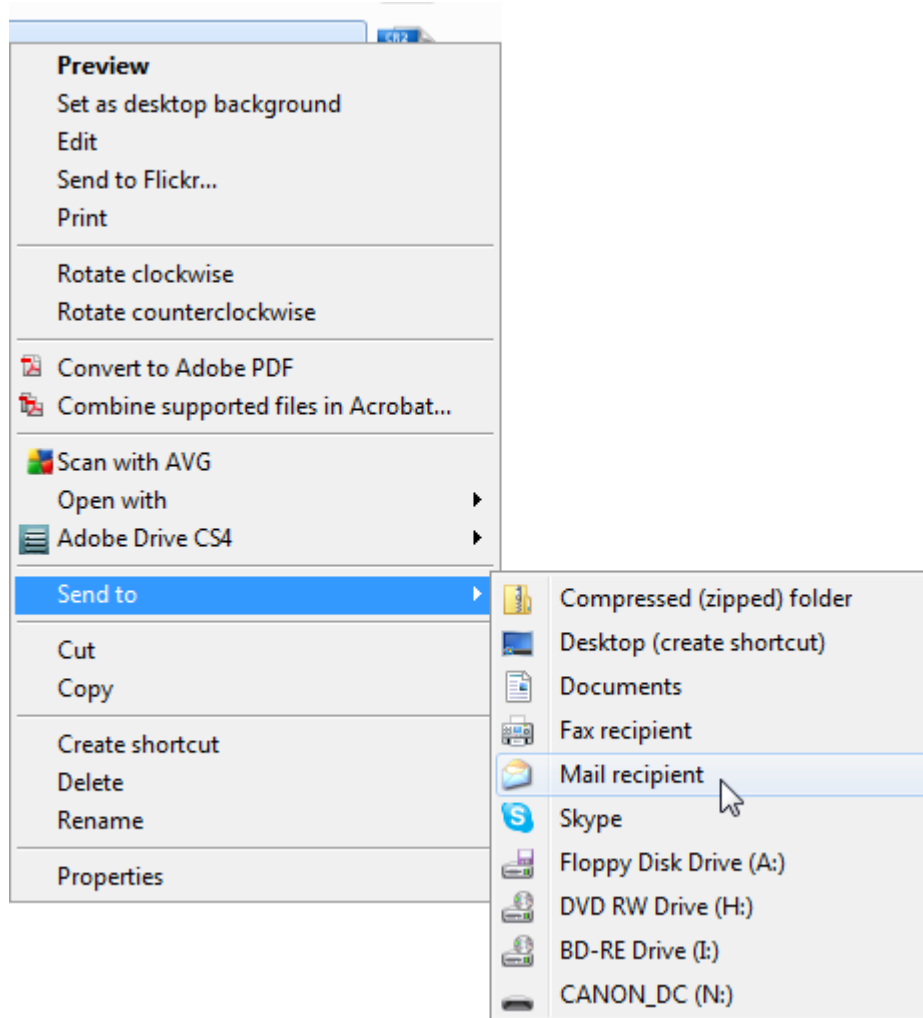


Note that you can see the file format under the 'Type' column. You only want to select JPEG images.

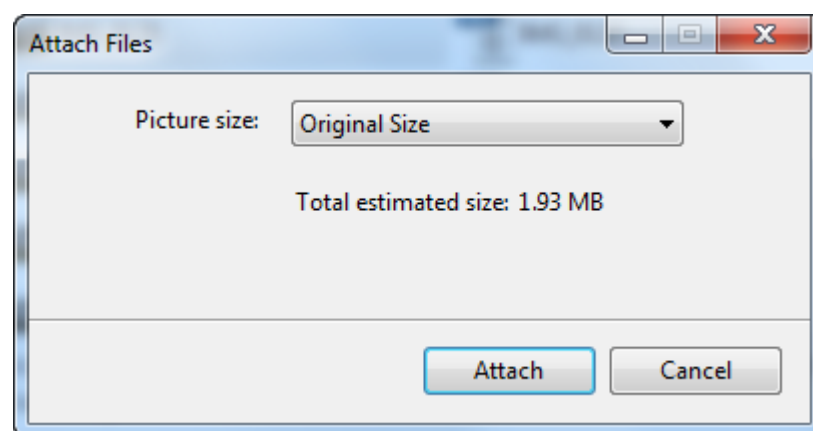
STEP 2 - Identify the image you wish to e-mail. You may find it easier to view the thumbnail images by selecting the 'More Options' icon and then setting the slider to 'Large Icons'.



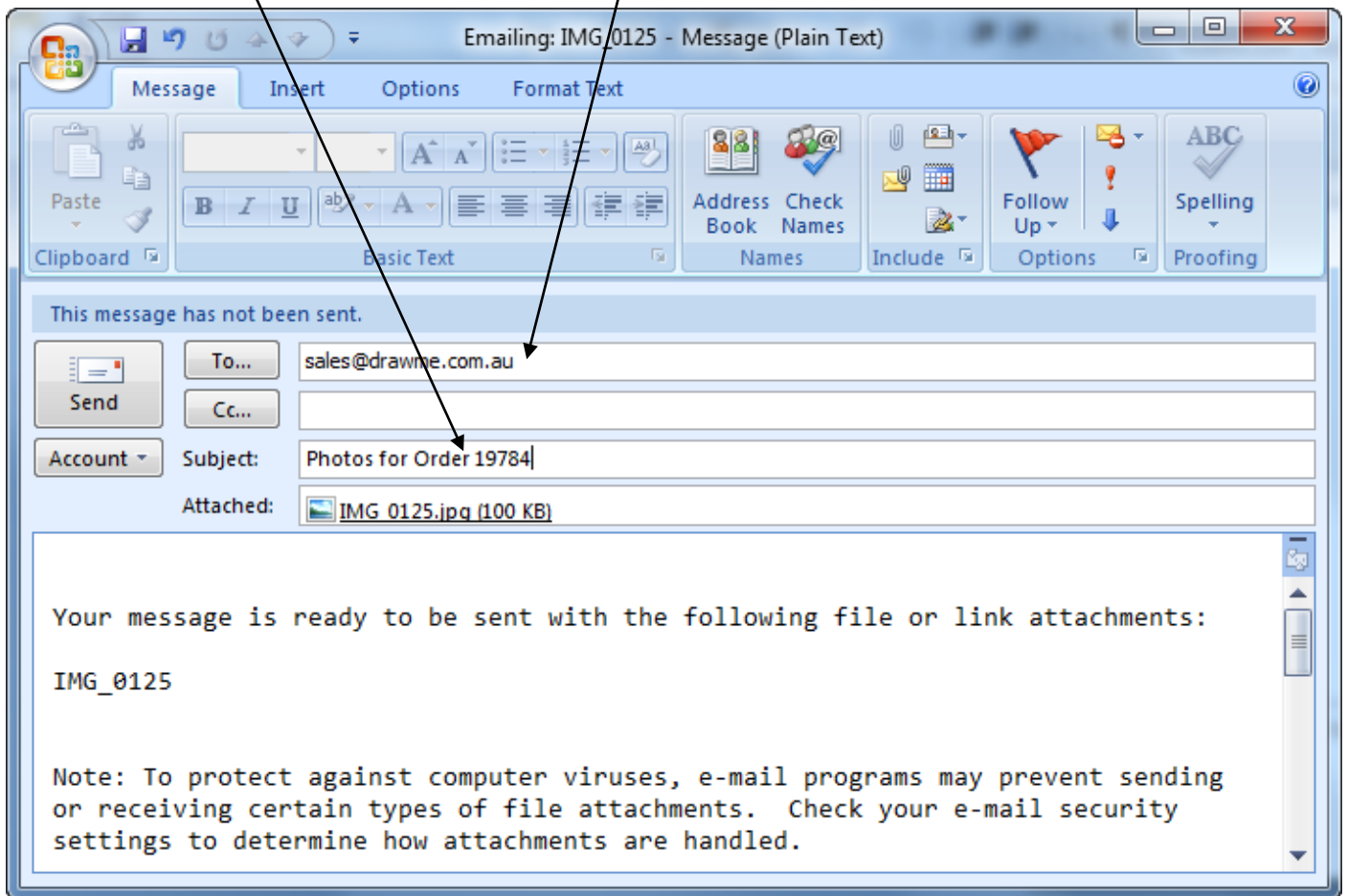
STEP 3 - Right click with your mouse on any image you wish to e-mail and select 'Send to' and then 'Mail recipient'



STEP 4 - In the pop up window that appears make sure that you select the **Original Size**.



STEP 5 - You should now have a window like the one below. Note that you will need to send the e-mail to **sales@drawme.com.au**. Also, make sure that you add your order number.



Repeat this process for each of the images. It is a good idea to send multiple e-mails rather than attach all images to one e-mail so that e-mails do not get rejected for being too large.

If you have any problems sending images then just get in touch. I am always happy to help.